

NAME: RANDOM NO.

CANDIDATE NO.

UCE MOCK

BIOLOGY

THEORY

553/1

2 ½ HOURS

**UGANDA CERTIFICATE OF EDUCATION
MOCK EXAMINATION
BIOLOGY PAPER 1
(THEORY)
553/1**

TIME: 2 HOURS 30 MINUTES

INSTRUCTIONS

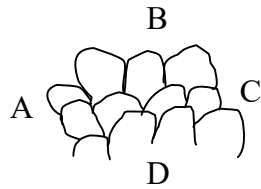
- *Answer all questions in section A and B*
- *Write the answers to section A in the boxes in the margin of each question*
- *Write answers to section B in the spaces provided*
- *Answer only two questions from section C*
- *Write the answers to section C on the answer sheets provided.*

FOR EXAMINERS USE ONLY

SECTION	MARKS
A	
B 31	
B 32	
B 33	
C	
C	
TOTAL	

1. The commonest pioneer species during ecological succession are
 - A. Lichens
 - B. Mosses
 - C. Ferns
 - D. Forests☐
2. One major characteristic feature present in mesophyll cells but lacking in other plant cells is
 - A. Sap vacuole
 - B. Chloroplasts
 - C. Mitochondria
 - D. Cell walls☐
3. One major disadvantage of an exoskeleton is that it is
 - A. Impermeable to water
 - B. Impermeable to oxygen
 - C. Rigid, hindering movement
 - D. Rigid, hindering growth☐
4. When amoeba is placed in a hypertonic solution, formation of contractile vacuoles occurs at a
 - A. High rate in order to eliminate excess water
 - B. High rate in order to eliminate excess salts
 - C. Slow rate because there is little water
 - D. Slow rate because there is little salt☐
5. The tape-like structure of a tapeworm is for increasing
 - A. Camouflage
 - B. Rate of reproduction
 - C. Diffusion rate
 - D. Protection from the hosts enzymes☐
6. Brightly coloured large petals in flowers increases the following chances except
 - A. Self pollination
 - B. Insect pollination
 - C. Cross pollination
 - D. Variability☐
7. Which one of the following may not be considered as a contraceptive method?
 - A. Rhythm method
 - B. Abstinence method
 - C. Tubal ligation
 - D. Coitus interruptus☐
8. One advantage of complete metamorphosis over incomplete metamorphosis in insects is that complete metamorphosis
 - A. Occurs faster
 - B. Occurs slowly
 - C. Involves 4 stages
 - D. Reduces competition☐

9. The figure below shows part of the skin and scales on a fish. The most probable position of the head to the fish is in direction:



- A.
B.
C.
D.

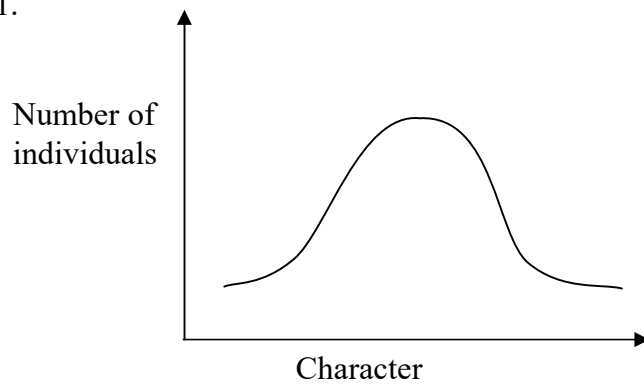
☐

10. Which one of the following is the major factor in leaching soil?

- A. Large number of micro organisms
B. High nutrient content
C. Large number of macro organisms
D. High rainfall

☐

11.



The following characters may give rise to the curve above except

- A. Height in humans
B. Weight in cattle
C. Skin colour in humans
D. Blood groups in humans

☐

12. Genes on the same chromosome are usually inherited together because they are

- A. Dominant
B. Linked
C. Recessive
D. Co-dominant

☐

13. Amino acids are to proteins as are to starch

- A. Glucose molecules
B. Fatty acid molecules
C. Glycerol molecules
D. Maltose molecules

☐

14. Which combination of the following factors will lead to high transpiration rate?

- | | |
|--------------------------------|-------------------------------|
| i) High temperature | v) Low temperature |
| ii) High humidity | vi) Low humidity |
| iii) High atmospheric pressure | vii) Low atmospheric pressure |
| iv) High wind velocity | viii) Low wind velocity |

- A. i, ii, iii, iv
B. v, vi, vii, viii
C. i, ii, iii, iv
D. i, iv, vi, vii

☐

15. Agglutination of blood is most likely to occur when the respective donor and recipient are of blood group

- A. A and AB
B. B and AB
C. O and AB
D. AB and O

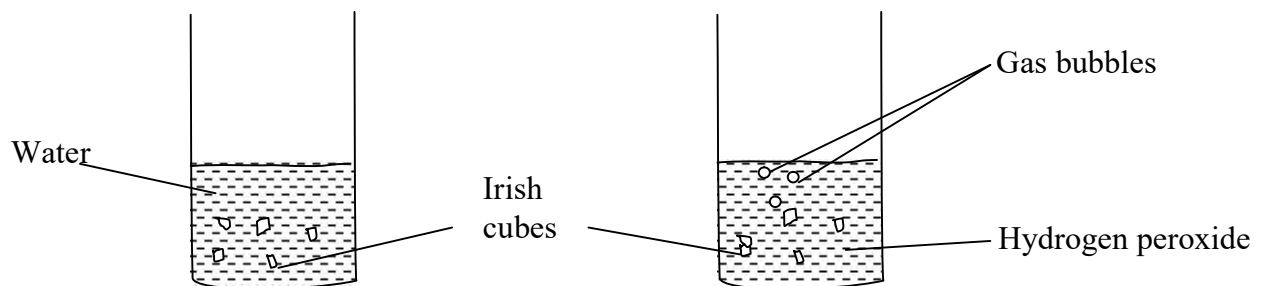
☐

16. The major advantage of narrow lumen of arteries is

- A. Fast delivery of metabolites to far organs
B. Reduced blood pressure
C. Protection from bursting
D. Fast return of blood to the heart

☐

17. The enzyme property under investigation in the figure below is that enzymes are



- A. Protein in nature
B. Specific
C. Affected by pH
D. Denatured by heat

☐

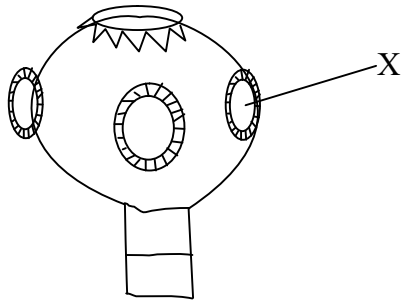
18. When Mimosa pudica is touched, its leaves fold, this response belongs to same group as

- A. Growth of plant shoots towards light
B. Opening of flowers of some plants in the morning
C. Euglena swimming towards light
D. Plant shoot growth away from the pull of gravity

☐

19. Which one of the following is a major reason for lack of special excretory organs in plants?
- A. Plants do not excrete
 - B. Plants do not use proteins
 - C. Plants deposit some excretory products in organs which are later shed off
 - D. Plants do not take in oxygen during respiration
20. Which one of the following sets of hormonal deficiency lead to excessive loss of water from the body
- A. Insulin and ADH
 - B. Oestrogen and Insulin
 - C. Thyroxine and ADH
 - D. Oxytocin and insulin
21. Fusion of some bones in birds skeletons is for
- A. Reduction in weight
 - B. Streamlining the body
 - C. Formation of a rigid framework
 - D. Increasing surface area
22. Which one of the following would increase the “green house effect”?
- A. Planting more trees
 - B. Using solar energy instead of fossil fuels
 - C. Building more industries which use petroleum
 - D. Increased use of hydro-electric power, HEP
23. The stage in cell division where synthesis of protoplasm and replication of genetic material is
- A. Prophase
 - B. Interphase
 - C. Metaphase
 - D. Telopahse
24. Insects are one of the most successful classes of animals because of the following except
- A. They lay very many eggs
 - B. Short life cycle
 - C. Many mouth modifications
 - D. Intermittent growth
25. Which one of the following pairs constitutes homologous organs
- A. Wings of a bat and those of insects
 - B. Flippers of whales and wings of a bird
 - C. Hands of humans and wings of insects
 - D. Wings of insects and fins of a fish

26. The figure below shows the scolex of a tapeworm. The part labeled X is used for



- A. Sight
- B. Feeding
- C. Excretion
- D. Anchorage

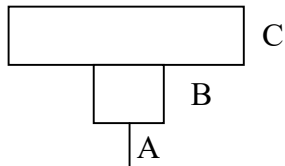


27. Products of digestion absorbed into the lacteals are transported by the

- A. Blood capillaries
- B. Lymphatic vessels
- C. Veins
- D. Arteries



28. The figure below shows an inverted pyramid

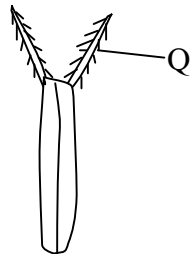


Which one of the sets below shows the correct organisms at trophic levels A, B and C in their respective order?

- A. Tree, Birds, Mites
- B. Grass, Cattle, Ticks
- C. Grass, Antelopes, Lions
- D. Trees, Termites, lizards



29. The figure below shows a Bidens fruit



Part labeled Q is formed from

- A. Corolla
- B. Calyx
- C. Style
- D. Filaments



30. A small body needs more covering on a cold day than a big adult because the small body has a
- A. Delicious skin
 - B. Small surface area to volume ratio
 - C. Large surface area to volume ratio
 - D. Low metabolic rate



SECTION B

31. An investigation was carried out into the concentration of lactic acid in the blood of a man before, during and after a vigorous exercise. The results are summarized below.

Time (minutes)	Concentration of lactic acid (mg/100cm³)
-10	9
0	14
10	80
15	95
20	70
40	35
60	22
80	18

a) Represent the above information on a suitable graph.

b) Where in the human body is lactic acid produced during the exercise?

.....

.....

c) i) Describe the graph obtained.

.....

.....

.....

.....

.....

.....

ii) Give reasons for the observed changes in concentration of lactic acid in blood.

.....

.....

.....

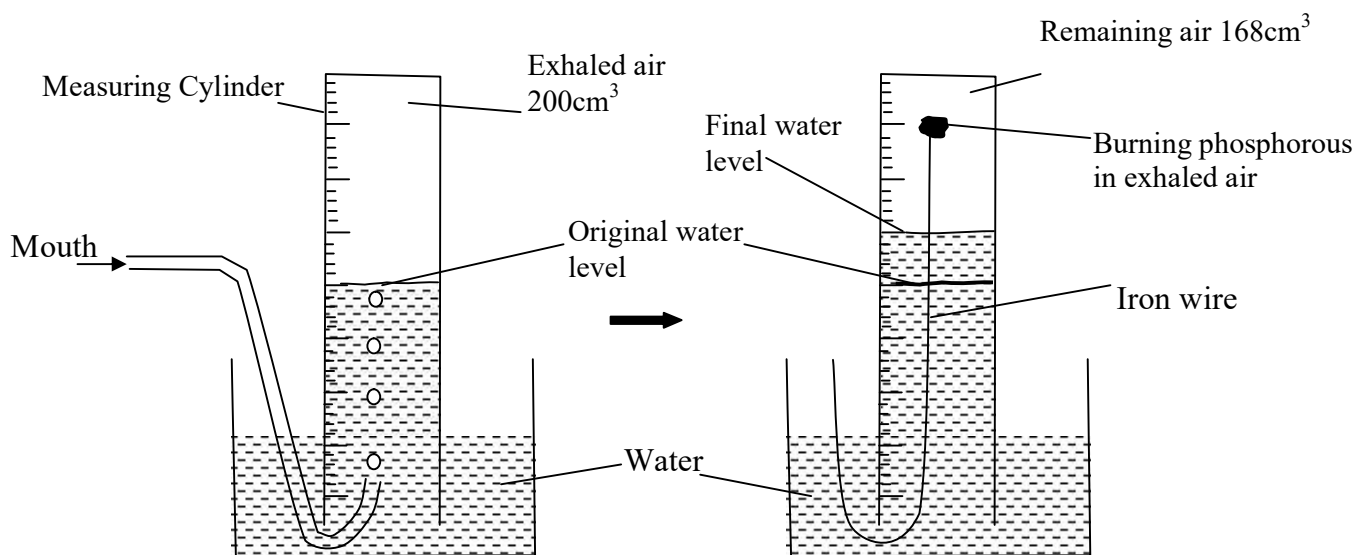
.....

.....

.....

.....

32. In an experiment, a measuring cylinder was filled with water and then inverted over a delivery tube. 200cm^3 of exhaled air was bubbled into the measuring cylinder. A piece of phosphorus born on a wire was pushed into the exhaled air in the cylinder. After phosphorous stopping to burn, the volume air was 168cm^3 .



a) State the aim of the above experiment

.....

.....

- b) i) Calculate the percentage decrease in volume of air after the burning of phosphorus.

.....

.....

.....

.....

.....

- c) Explain why the volume of air decreases at the end of the experiment.

.....

.....

.....

.....

.....

- d) What volume of air would remain if the same volume of atmospheric air was used instead of exhaled air?

.....

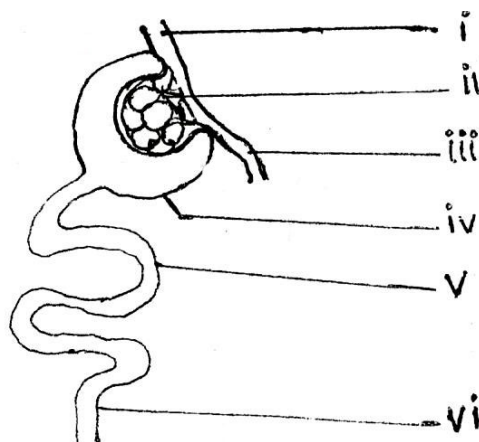
.....

.....

.....

.....

33. The diagram below shows part of the human nephron



a) Name the labeled parts

- | | |
|-----------|-----------|
| i | iv) |
| ii | v) |
| iii | vi) |

b) Explain how part (ii) is adapted for its functions

.....

.....

.....

c) What is the importance of the diameter of vessels (i) and (iii)?

.....

.....

.....

d) State the importance of the process which occurs in part(v)

.....

.....

.....

.....

SECTION C
Answer two questions

34. In which ways is water important to living organisms?

35. a) State the importance of bones in a human body

b) State the difference between an exoskeleton and Endoskeleton

c) Describe the process leading to bending of a human arm.

36. a) Explain how plants adapt for

i) Cross pollination

ii) Wind pollination

iii) Insect pollination

b) State the differences between the processes leading to fertilization in flowers and humans

37. A cross between Red and White flowered snap dragon plants produces F₁ with Pink flowers

a) Explain the absence of white and red flowered plants in the F₁. Fully show your working.

b) Calculate the genotypic and phenotypic ratios of a cross between F₁ plant and a white flowered plant

*****END*****